



32 Series X-Tended Reach
Dual Auger Grain Cart

Dual Augers Designed
to the
NEXT LEVEL



32 SERIES MODELS 1132 • 1432 • 1732 • 2032 • 2332



Dual Augers Designed
to the

NEXT LEVEL



Storage Position
(Narrow Transport)



Field Position
(Convenient Storage in the Field)



Unload Position
(Maximum Upward, Outward & Forward Reach)

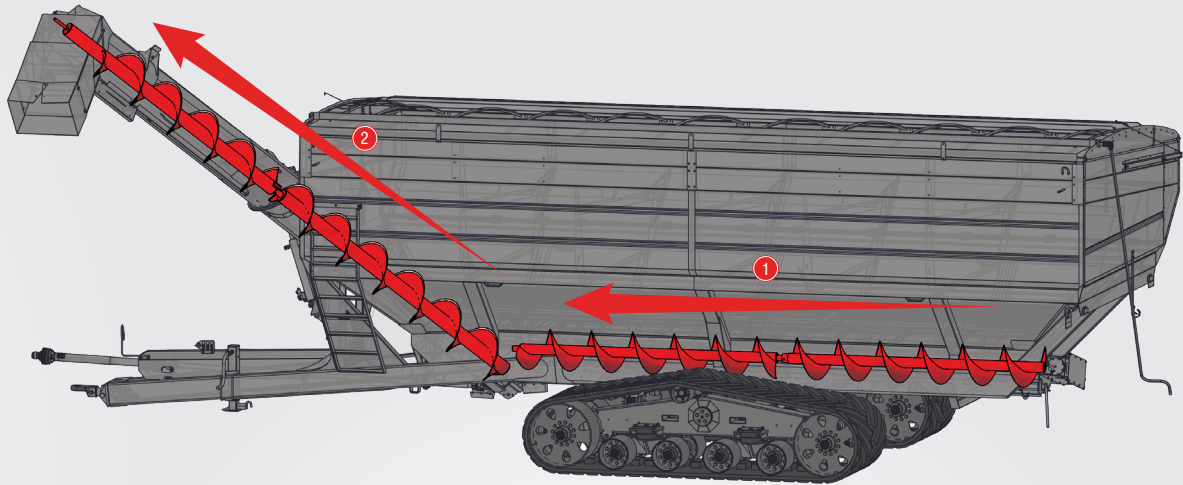
*Patented Telescoping
Hydraulic Flow Control Spout*

J&M's 32 Series X-Tended Reach grain carts take dual auger designs to the next level by combining all the advantages of a single auger front folding design with the low profile of a dual auger grain cart. The upper auger utilizes a three position upper auger design. The "Storage Position" keeps the upper auger within the footprint of the tires/tracks for narrow storage and transport. The "Field Position" keeps stress off the auger hinge during field operations and keeps the spout out of the mud and dirt. The "Unload Position" extends out to give the grain cart operator maximum upward, outward and forward reach during unloads. The X-Tended Reach design provides greater upward, outward and forward reach for superior operator visibility and reduced fatigue.

The patented hydraulic flow control spout allows the operator to precisely place grain across the trailer. The Side-Shooter design positions the spout perpendicular to the trailer so all four corners can be easily filled! The telescoping spout features a three-part design that extends outward for maximum side reach and retracts when in the downward position to maintain maximum unloading height. Each of the three sections can be easily removed or added to offer multiple combinations of height and reach to fit your particular unloading need. The patented telescoping Side-Shooter Flow Control Spout allows for precision placement of the grain while unloading, reducing the chance of spilling and ensuring an easy and complete fill of the trailer every time.

Take your farming to the next level with a front folding 32 Series X-Tended Reach dual auger grain cart designed to maximize your harvesting efficiency.





SMOOTH TRANSITION

Efficient and Gentle

Many competitor dual auger grain carts move grain from the tank to the unload auger in three directions. First, the grain is moved horizontally across the floor of the tank. Second, the grain is dropped downward into a sump. Third, the grain is severely redirected into the unload auger. This increases the potential to damage grain and decreases unloading efficiency.

J&M's dual auger design places the vertical unloading auger inside the tank and at the base of the horizontal auger, eliminating the need for a sump. Because the unloading auger extends towards the tractor cab, not at a perpendicular angle towards the side, the redirection and damaging of grain is minimized and the unloading process is more efficient.

LOW PROFILE

J&M's 32 Series X-Tended Reach Dual Auger Grain Cart offers one of the lowest profiles on the market. The combine side height, depending on your model will range from 9'-9" to 11'-3", providing maximum clearance for the combine auger and a lower center of gravity for added stability over uneven terrain.

Low Profile

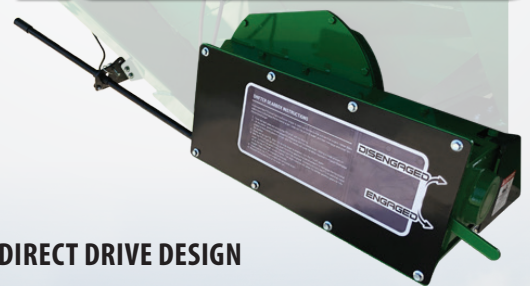




PATRIOTIC FARMER EDITION

There is probably no profession more principled or closely associated with the founding ideals of America than farming. And you'd be hard pressed to find anyone more patriotic than the American farmer. Every day farmers work long hours to produce the highest quality food for people all around the world while ensuring the proper biological diversity for healthy soil and clean air and water for future generations. They have a deep love and pride of country and responsibility to protect the freedoms necessary to preserve our livelihood of individual liberty and opportunity for all.

To honor the patriotism of the American farmer, the Patriotic Farmer Edition features American flag decals on J&M products.



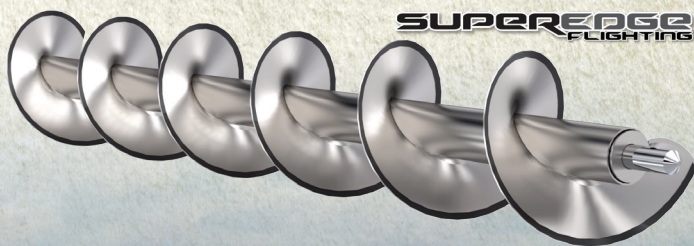
DIRECT DRIVE DESIGN

Less Maintenance...More Dependable

Typical dual auger grain carts utilize costly belts, sprockets or pulleys that cause problems and increase maintenance expense. The 32 Series X-Tended Reach Grain Cart features a powerful direct drive design with dual gearboxes to maximize unload efficiency and performance, year after year.

COMPUTER BALANCED AUGERS WITH REINFORCED FLIGHTING

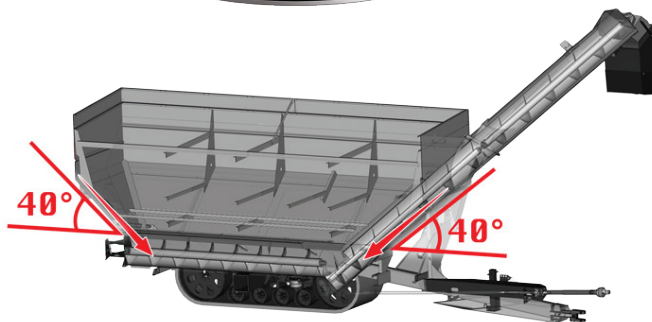
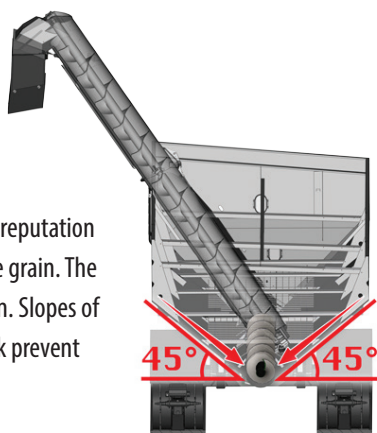
Computer balanced (within 1 oz.) 20" horizontal and 22" vertical augers with Super Edge reinforced flighting for maximum unload speed and durability.





EXCELLENT CLEANOUT

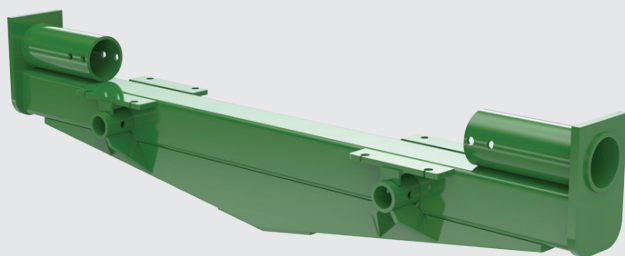
J&M dual auger grain carts have built a solid reputation for excellent cleanout...even in high moisture grain. The secret is in the steep slopes of the tank design. Slopes of 45° on the sides and 40° in the front and back prevent bridging of high moisture grain and rice.



V-TRUSS AXLE

Not Prone to Twisting or Bending

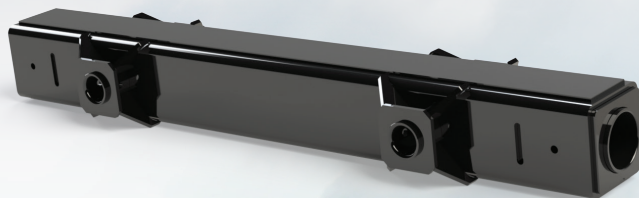
Competitor grain cart axles feature small tubular steel that is prone to bending or I-beam designs that are prone to twisting. This can put premature stress on the rest of the cart. J&M's exclusive V-Truss axles are designed using heavy-duty tubular steel with a reinforced V-Truss design to resist both bending and twisting, protecting the cart from premature wear and tear. Available on single wheel carts.



HEAVY-DUTY TUBE AXLE

Maximum Shear and Bending Strength

The axle for track carts is constructed with 12" x 12" x 1/2" (36" track) or 12" x 12" x 5/8" (46" track) thick tubing for maximum shear and bending strength, capable of withstanding the heaviest loads under the most extreme conditions.

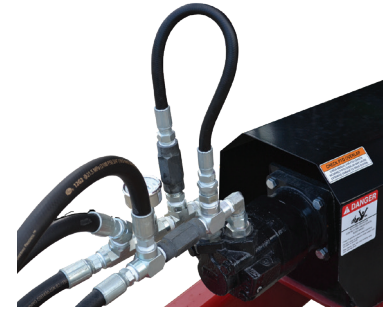




The new Glide Right roll tarp is designed to offer greater protection of your valuable crops while making opening and closing quick and easy. The patent pending design keeps the tarp square and in line when turning the roll tube, eliminating the chance of binding and creating a tighter seal to keep moisture out and prevent the chance of wind flapping or lifting the tarp during transport.



**ELECTRIC
ROLL TARP
UPGRADE**



Hydraulic Drive Kit



Camera Kit



WHY ADD A SCALE SYSTEM?

Adding a scale system to your grain cart will increase your harvesting efficiency and record keeping accuracy. All scales are factory installed and calibrated to be accurate within 0.5%. J&M was the first in the industry to use a 5 point scale system that places 4 weigh bars in the axle, so the weight is distributed on the weigh bars evenly. An upgraded indicator will automatically log the unloads for simpler record keeping, and with smart options like auto gate shut off, the operator can focus on harvest. Exporting records is as simple as an email or inserting a USB drive. With the iFarm Cart, your records can be sent directly to the cloud for the farm manager with no user input. Choose any of our indicators from economically priced to feature rich depending on your farming needs.

J&M IFARM CART BY AGRIMATICS™

J&M iFarm CART by Agrimatics™ is the leading edge of agricultural weighing systems. The patent-pending system automatically saves every unload and connects wirelessly to all in-range mobile devices providing world-class indicator displays to the entire team. iFarm Cart is simple to install and simpler to use. Say goodbye to missed unloads and losing your harvest data!

- Use your Android or iOS device to automatically record all your harvest
- No Cell Data Required! Connects directly via Bluetooth
- Anyone in range can connect and see LIVE weight
- Free Unlimited Cloud Backup via Agrimatics Aero
- Save all your harvest data through one free app
- Powerful & Cost-effective options available*

*Options purchased separately

SCALE ADD-ON OPTIONS

- Auto-Gate Shut-Off Kit for predetermined weight (For use with Digi-Star GT 560 Indicator Only)
- Thermal Printer for Digi-Star Indicator
- Auto-Gate Shut Off Kit (For use with J&M iFarm Cart)



iFarm Express



GT 400

BASE INDICATORS	Digi-Star GT 400	iFarm Express
Start/Stop Operation	Yes	Yes
Field Data Storage	1 Line	Unlimited
iOS/Android Compatible	No	Yes
Printer Ready /Serial Port	Yes	No
Easy Data Export	No	Yes (.CSV File)

UPGRADED INDICATORS	Digi-Star GT 560	iFarm Cart
Auto Unload Detect	Yes	Yes
Field Data Storage	Yes	Yes
USB Data Transfer	Yes	No
Built-in Email & Cloud	No	Yes
Software Updates	No	Over The Air
Auto Gate Shut Off Ready	Yes	Yes
iOS/Android Compatible	Yes*	Yes
Desktop Software	Included	Free Web Based
Cloud Storage	Yes*	Yes

* ERM WiFi Module Required



GT 560



iFarm™ Cart



V4 TRACK SYSTEM

- Built from high-strength plate steel, the V4 Track System has a strong but lighter undercarriage frame compared to competitors. The result is minimized compaction and reduced weight for handling during assembly and maintenance.
- The sleek design has very few places for mud and debris to settle, keeping buildup to a minimum.
- Oil bath hubs, greaseless pivots (self-lubricated sleeve bearings), and a spring tensioner system result in a track system that is virtually maintenance free during day-to-day operations. Each oil bath hub has a cassette style seal, a separate seal guard, and an external v-ring seal for a total of 6 contacting sealing lips and 2 non-contacting sealing lips for better sealing under the harshest conditions.
- The axle mount height of the V4 Track System is among the lowest in the industry, reducing the overall height of the implement.
- Upper rollers limit unsightly belt flop.
- The bogie wheel pivots are closer to the ground than on competitors' models, allowing the bogies to more easily and smoothly walk over obstacles.
- Lower profile end wheels result in less bearing stress during turns, leading to longer bearing life. The smaller diameter of the end wheels also allows for bogie wheels to be located nearer the end wheels, resulting in a more uniform ground footprint.
- End wheel cutouts provide an exit point for mud/debris during cleaning and an access point for inspection/maintenance.



LONGER TANK LIFE...LESS MAINTENANCE

Redesigned for 2021, J&M's Stabilizer Trax 2 System provides all the benefits of our V4 track system and more. The patented suspension undercarriage features the following benefits not provided by other track designs:

1. Rubber spring suspension on the bogie wheels that results in 3x less tank vibration, creating a smoother ride that greatly extends the cart life.
2. Load adjusted end wheel height. The end wheels are raised under light or no load to reduce tread wear, require less turning force, and to climb over uneven terrain more easily. As load is increased, the end wheels lower to utilize the entire track footprint, minimizing compaction.
3. Independently pivoting bogie pairs. The bogie wheels can pivot up to 14° front-to-back and 7° side-to-side, reducing stress over uneven terrain on the belt, wheels and hubs.

The 2021 redesign features a more efficient design that reduces track weight while increasing the ground footprint, resulting in even less compaction. Wheel components are completely revamped to provide even larger sight windows for checking oil level and the strongest bearing sets in the industry.

STABILIZER TRAX2 ADVANTAGES

- Patented suspension undercarriage
 - Suspension system utilizes rubber springs resulting in 3x less vibration than other track systems and similar vibration to an implement on tires
 - Reduced vibration results in longer cart life and a smoother ride
 - Idler wheels remain up when the cart is empty for reduced belt wear during transport
 - Raised end wheels easily climb over obstacles and make turning easier than traditional tracks
 - Idler wheels move down when cart is under load for maximum flotation
 - Independently suspended, oscillating bogie wheels pivot up to 14° front-to-back and 7° side-to-side to supply more uniform ground contact
 - Belt tension spikes are minimized, increasing bearing life
- X-Large ground footprint
 - Average ground pressure of 12 psi or less for 36" wide tracks, even on a 1500 bu. cart
 - 46" wide tracks provide the largest footprint in the industry at nearly 78 ft²
- The industry's strongest bearings provide unmatched performance under the heaviest loads
- Hubs have large sight windows to easily check oil levels from a distance

Model 36150-STX2	
36" Track Specification	Full Cart
Belt Width	36"
Overall Length	150"
Footprint Dimensions (One Track)	36" x 117.8"
Footprint Area (Both Tracks)	8,480 in ²
Avg. Ground Pressure with 1,500 Bushel Cart	12.2 psi
Pivot Shank	6" Dia.

Model 46155-STX2	
46" Track Specification	Full Cart
Belt Width	46"
Overall Length	155.6"
Footprint Dimensions (One Track)	46" x 121.4"
Footprint Area (Both Tracks)	11,170 in ²
Avg. Ground Pressure with 2,000 Bushel Cart	14.1 psi
Pivot Shank	7" Dia.

COMMON FEATURES



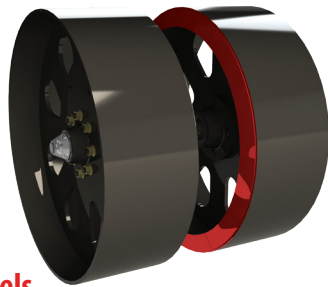
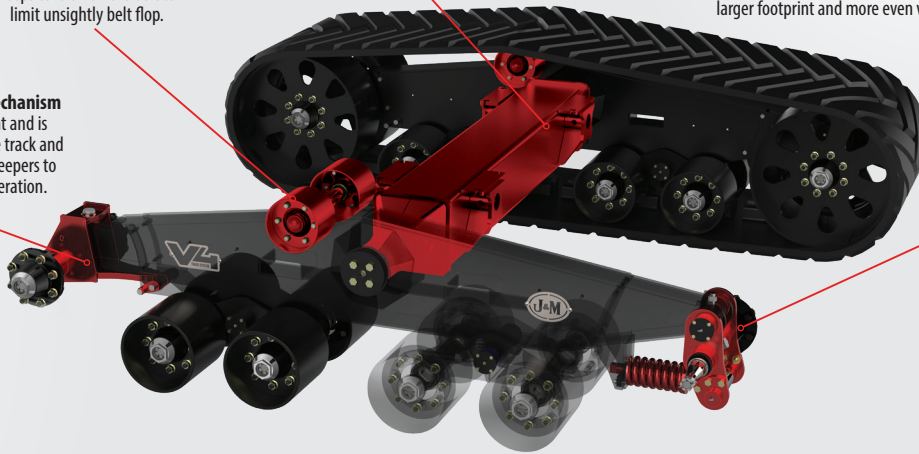
Optimized Track Geometry reduces weight while giving it a slightly larger footprint and more even wheel spacing. The result is minimized compaction.

High Strength Axle
The V4 Series uses a strong axle (the same tube axle as the Stabilizer Trax)

Upper Roller
keeps tension on the belt to limit unsightly belt flop.

Swivel Hitch Alignment Mechanism
uses two bolts for adjustment and is accessible from each side of the track and is accompanied by two steel keepers to prevent loosening during operation.

Maintenance Free Spring Tensioner
so there is no need for adjustment once set. "Set it and forget it."



End Wheels

Full-height flanges on end wheels significantly reduce guide lug wear, extending belt life.

Tube Axle

The heart of each track axle is 12" x 12" x 1/2" (36" track) or 12" x 12" x 5/8" (46" track) thick tubing for maximum bi-directional bending strength, capable of withstanding the heaviest loads under the most extreme conditions.



Tensioner

A single large diameter compression spring provides active tension for the track belt. The spring tensioner requires no daily adjustment, eliminating the hassle of hydraulic or other tension systems.

Upper Roller

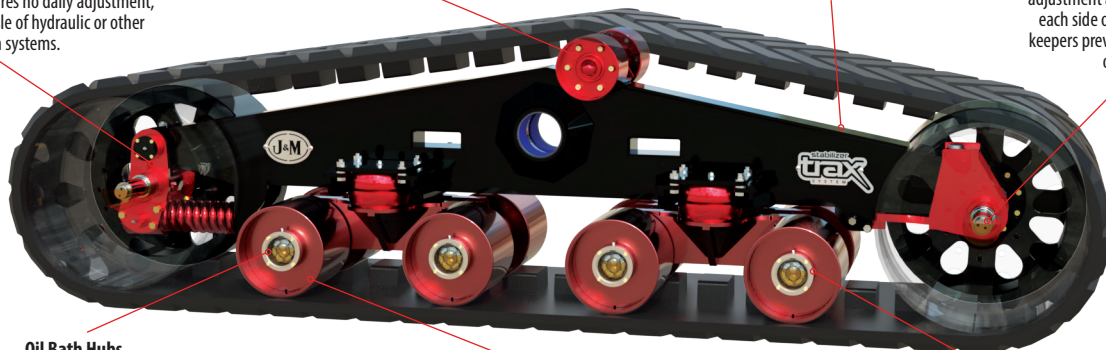
Upper Roller keeps tension on the belt and reduces belt flop.

Undercarriage Beam

Constructed from high-strength plate steel, the undercarriage beam provides superior strength at a reduced weight. The sleek design stays cleaner with minimized locations for mud buildup.

Swivel Hitch Alignment

The convenient alignment mechanism uses two bolts for adjustment and is accessible from each side of the cart. Two steel keepers prevent loosening during operation.



Oil Bath Hubs

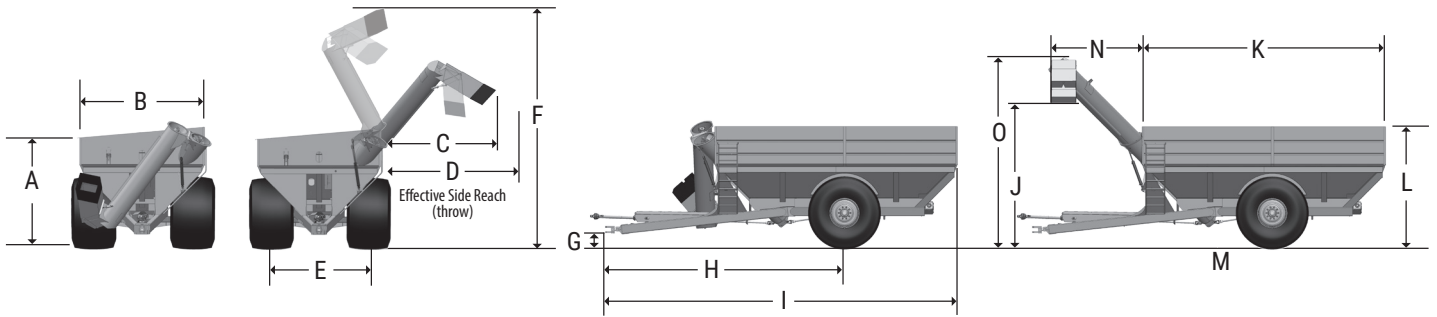
Oil bath hubs utilize synthetic oil for superior bearing protection and excellent lubricant flow, even in the coldest weather. There is no need for constant greasing of hubs. Multi-lip cassette seals with separate seal guards provide better sealing under the harshest conditions. Large sight windows make checking the oil level a breeze, even from a distance.

Bogie Wheels

Rubber springs and pivoting bogies significantly reduce tank shock loads and vibration while providing more uniform ground contact over uneven terrain. Each bogie pair can pivot 14° front-to-back and 7° side-to-side, reducing stress on the belt, wheels and hubs. (Stabilizer Trax only.)

Self-Lubricated Sleeve Bearings

All pivots (and bogie rollers on Stabilizer Trax) utilize self-lubricated sleeve bearings, requiring no daily greasing.



32 Series Dimensions

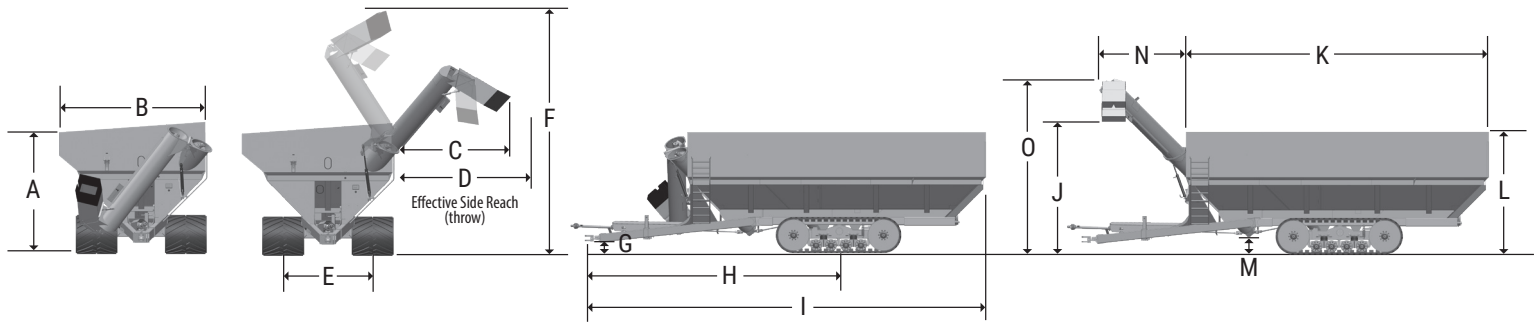
Single Wheel Option	MODEL 1132	MODEL 1432
Capacity	1,150 Bushels	1,450 Bushels
Auger, One Vertical	22"	22"
Auger, One Horizontal	20"	20"
Unload Rate (bu/min)	up to 740+	up to 760+
Wheels (2)	30x32, 32x36 or 44x32	44x32
Tires (2)	900/60R32 1050/50R32 IF1250/50R32	IF1250/50R32
Hubs (2)	10 Bolt or 20 Bolt	10 Bolt or 20 Bolt
Spindles (2)	6" Diameter	6" Diameter
Tongue Weight		
Empty	2,600 lbs.	2,650 lbs.
Loaded	4,000 lbs.	4,300 lbs.
Total Weight (approx.)	18,650 lbs.*	19,050 lbs.*
Walking Tandem Dual Wheels Option		
Capacity	1,125 Bushels	1,425 Bushels
Wheels (4)	16x42, 18x42	18x42
Tires (4)	480/80R42 or 520/85R42	520/85R42
Spindles (4)	4 1/2" Diameter	4 1/2" Diameter
Total Weight (approx.)	21,700 lbs.	22,100 lbs.
Tracks Option		
Capacity	1,175 Bushels	1,475 Bushels
Tracks (2)	36"x106", 36"x146" or 46"x155.6"	36"x146" or 46"x155.6"
Total Weight (approx.)***	24,800 lbs.	25,200 lbs.
Compaction Rate V4LT	15.4 lbs/sq inch	
Compaction Rate V4	11.0 lbs/sq inch	13.1 lbs/sq inch
Compaction Rate 36" Stabilizer	10.2 lbs/sq inch	12.1 lbs/sq inch
Compaction Rate 46" Stabilizer	8.1 lbs/sq inch	9.6 lbs/sq inch

32 Series Dimensions

	1132*	1432**	
A	10'-1"	11'-3"	<< LOW SIDE HEIGHT
B	11'-9"	11'-9"	
C	11'-0"	11'-0"	
D	13'-8"	13'-8"	<< GREAT SIDE REACH
E	10'-0"	10'-0"	
F	21'-11"	22'-2"	
G	1'-6"	1'-6"	
H	22'-4"	22'-4"	
I	33'-0"	33'-0"	
J	13'-3"	13'-6"	
K	22'-10"	22'-10"	
L	11'-3"	12'-5"	
M	1'-8"	1'-11"	
N	8'-6"	8'-6"	<< EXCELLENT VISIBILITY
O	17'-5"	17'-8"	

- * Measured with 900/60R32 tires, scales, roll tarp installed and a 20" hitch height
- ** Measured with 1250/50R32 tires, scales, roll tarp installed and a 20" hitch height
- *** Weight with 36" Stabilizer Trax2
- **** Weight with 46" Stabilizer Trax2





32 Series Specifications

Tracks Option	1732	2032	2332
Capacity	1,675 Bushels	1,970 Bushels	2,260 Bushels
Auger, One Vertical	22"	22"	22"
Auger, One Horizontal	20"	20"	20"
Unload Rate (bu/min)	up to 790+	up to 810+	up to 840+
Tracks (2)	46"x155.6"	46"x155.6"	46"x155.6"
Tongue Weight			
Empty	2,500 lbs.	2,600 lbs.	2,500 lbs.
Loaded	3,100 lbs.	3,300 lbs.	3,500 lbs.
Total Weight (approx.)****	33,300 lbs.	33,800 lbs.	34,300 lbs.
Compaction Rate 36" Stabilizer	14.1 lbs/sq inch	16.1 lbs/sq inch	
Compaction Rate 46" Stabilizer	11.1 lbs/sq inch	12.6 lbs/sq inch	14.1 lbs/sq inch

32 Series Dimensions

	1732	2032	2332	
A	9'-9"	10'-7"	11'-3"	<< LOW SIDE HEIGHT
B	13'-9"	13'-9"	13'-9"	
C	11'-0"	11'-0"	11'-0"	
D	13'-8"	13'-8"	13'-8"	<< GREAT SIDE REACH
E	8'-2"	8'-2"	8'-2"	
F	22'-1"	22'-1"	22'-1"	
G	1'-8"	1'-8"	1'-8"	
H	25'-7"	25'-7"	25'-7"	
I	40'-2"	40'-2"	40'-2"	
J	13'-6"	13'-6"	13'-6"	
K	30'-0"	30'-0"	30'-0"	
L	10'-9"	11'-7"	12'-3"	
M	2'-0"	2'-0"	2'-0"	
N	8'-6"	8'-6"	8'-6"	<< EXCELLENT VISIBILITY
O	17'-7"	17'-7"	17'-7"	

Specifications are subject to change without notice or obligation.
 Bushel capacity measured with #2 corn at 15% moisture content (56 lb. test weight)
 Time varies with RPM and moisture content of grain
 Tongue weight is for uniformly filled cart





X-tended Reach
32 Series Dual Auger Grain Cart



GUARANTEE

J & M MANUFACTURING CO guarantees against any faulty construction or materials for a period of ONE year. We reserve the right to inspect and decide whether material or construction was faulty or whether abuse or accident voids our guarantee.

Specifications are subject to change without notice or obligation.

* Registered Trademark of J. & M. Mfg., Co. Inc.