

# Flailbot Mini

The smallest of the Flailbot range, but packed with all the innovative features of the larger models. Easy access to site, with a lower gross weight and smaller foot print.

With a punchy 35hp engine, whilst it appears to be small, the Flailbot Mini model is very capable. Cutting head size is 1300mm (51") and this makes this model perfect for small access sites, and to be transported on smaller vehicles between sites.

## Key Features

- 3 cylinder Yanmar diesel engine
- 20 litre (5 USG) fuel capacity
- Closed circuit piston pump cutting circuit
- 55 degree working angle
- Hydrostatic transmission



**Want to know more about  
the Flailbot range?**

Scan the QR code to the left with a  
smart phone or tablet and compatible  
app to instantly view the page.

Alternatively visit:

[www.bomford-turner.com/remote/flailbot-mini/](http://www.bomford-turner.com/remote/flailbot-mini/)







### Sleek low design

Giving maximum accessibility to difficult areas whilst remaining well protected with full engine covers.



### Integral rollbar

Standard on all Flailbot models, and offers the additional feature of lift points.

### Flailbot Mini Weights & Dimensions

Engine Size / Capacity

**35hp /**  
1,331 Litres / 81,223 in<sup>3</sup>

Flailbot with Oil & Fuel

**860 kg / 1,896 lbs**

1300 Flail Head

**210 kg / 462 lbs**

## Features & Specification

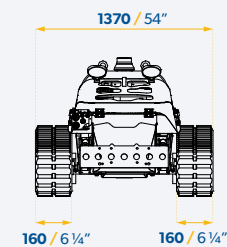
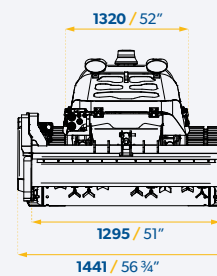
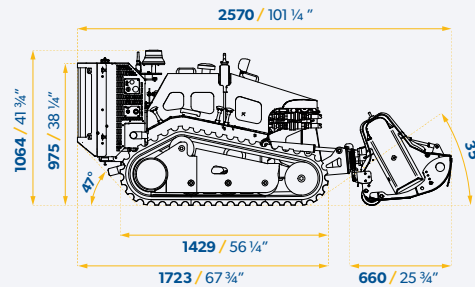
Flailbot	Mini (35hp)
<b>Operation</b>	
Max Slope	55°
Transmission	Hydrostatic
Speed	0-7 km/h
Weight	860kg / 1,896lbs
<b>Engine</b>	
Brand / Make	Yanmar
Model	3 Cylinders, Diesel
Engine Size	1,331 Litres / 81,223 in <sup>3</sup>
Power	25.7 kW / 35 Cv
Max Torque	98 Nm / 72 ft-lb @ 1800 rpm
Intake	Aspirated
Cooling	Liquid
Air Filter	Dry
Diesel Tank Capacity	20 Litres / 5 USG
Engine Oil Quantity	6 Litres / 2 USG
<b>Electrical Circuit</b>	
Operating Voltage	12 Vcc
Alternator	50 Amp
Battery	18 Ah

Flailbot	Mini (35hp)
<b>Hydraulic System</b>	
Displacement	Triple piston pump with variable engine size and closed circuit
Displacement Capacity	55 Litres max @ 2750 rpm 15 USG max @ 2750 rpm
Displacement Pressure	280 Bar max
Services	Gear Pump
Services Capacity	11 Litres max @ 2750 rpm 3 USG max @ 2750 rpm
Services Pressure	200 Bar max
Tool	Closed Circuit Piston Pump
Tool Capacity	50 Litres max @ 2750 rpm 13 USG max @ 2750 rpm
Tool Pressure	250 Bar max
Oil Tank Capacity	25 Litres / 7 USG
Operating Oil Quantity	35 Litres / 9 USG
<b>Controls</b>	
Brand	Scanreco
Frequency	434 Mhz
Range Signal	150m / 492'
Battery	Rechargeable



### Standard equipment

Flashing beacon and full machine/ engine guards and covers fitted as standard on all models.





# Flailbot Compact

Flailbot Compact carries all the same features as the Mini model, with the bigger Flailbot original 40hp Perkins industrial powerplant.

The compact size, but powerful 40hp Perkins engine makes the compact model a contractor's first choice. With the added feature of manual wind out track width as standard, and a number of attachments available.

## Key Features

- Perkins 40hp industrial engine
- 1300mm (51") cutting head
- Manually wind out track frame
- Auto hydraulic track tension system
- Full engine covers as standard



**Want to know more about the Flailbot range?**

Scan the QR code to the left with a smart phone or tablet and compatible app to instantly view the page.

Alternatively visit:

[www.bomford-turner.com/remote/flailbot-compact/](http://www.bomford-turner.com/remote/flailbot-compact/)







### Radiator cooler cover

Hinged cooler guard for easy access.



### Easy access

Engine protection covers easily removed for fast and simple access for maintenance.

### Flailbot Compact Weights & Dimensions

Engine Size / Capacity  
**40hp /**  
 1,496 Litres / 91,292 in<sup>3</sup>  
 Flailbot with Oil & Fuel  
**940 kg / 2,072 lbs**  
 1300 Flail Head  
**210 kg / 462 lbs**

## Features & Specification

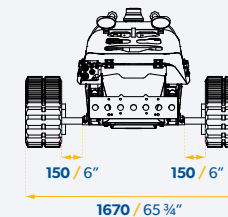
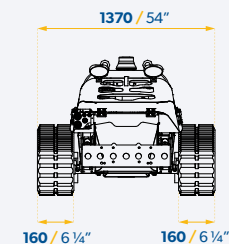
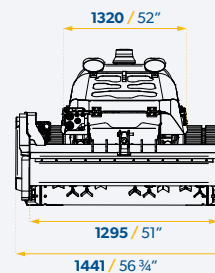
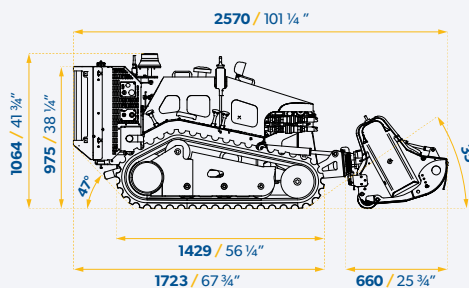
Flailbot	Compact (40hp)
<b>Operation</b>	
Max Slope	55°
Transmission	Hydrostatic
Speed	0-7 km/h
Weight	940kg / 2,072lbs
<b>Engine</b>	
Brand / Make	Perkins
Model	3 Cylinders, Diesel
Engine Size	1,496 Litres / 91,292 in <sup>3</sup>
Power	30 kW / 40.8 Cv
Max Torque	112 Nm / 83 ft-lb @ 1800 rpm
Intake	Turbocharged
Cooling	Liquid
Air Filter	Dry
Diesel Tank Capacity	20 Litres / 5 USG
Engine Oil Quantity	6 Litres / 2 USG
<b>Electrical Circuit</b>	
Operating Voltage	12 Vcc
Alternator	65 Amp
Battery	18 Ah

Flailbot	Compact (40hp)
<b>Hydraulic System</b>	
Displacement	Triple piston pump with variable engine size and closed circuit
Displacement Capacity	55 Litres max @ 2750 rpm 15 USG max @ 2750 rpm
Displacement Pressure	280 Bar max
Services	Gear Pump
Services Capacity	13 Litres max @ 2750 rpm 3 USG max @ 2750 rpm
Services Pressure	200 Bar max
Tool	Closed Circuit Piston Pump
Tool Capacity	52 Litres max @ 2750 rpm 14 USG max @ 2750 rpm
Tool Pressure	250 Bar max
Oil Tank Capacity	25 Litres / 7 USG
Operating Oil Quantity	35 Litres / 9 USG
<b>Controls</b>	
Brand	Scanreco
Frequency	434 Mhz
Range Signal	150m / 492'
Battery	Rechargeable



### Working range

All Flailbot models have an impressive working range of 150m (492').





# Flailbot Original

The original Flailbot, designed for challenging terrains with the powerful industrial Perkins diesel engine fitted as standard, providing the ultimate in power to weight performance in the remote controlled track bank mower market.

Covering challenging, steeply inclined terrain with a traditional man-on-board power mower puts a driver at risk. Remotely controlled wirelessly, Flailbot provides ultimate mowing capability whilst keeping the operator at a safe distance.

## Key Features

- Working with oil pressure ranges of 180 to 200 BAR
- Working with oil flows between 45 to 110 L/min
- Weight options from 310kg (683 lbs) up to 640kg (1,411 lbs)
- Skids to protect head
- Adjustable working height



**Want to know more about the Flailbot range?**

Scan the QR code to the left with a smart phone or tablet and compatible app to instantly view the page.

Alternatively visit:

[www.bomford-turner.com/remoteflailbot/](http://www.bomford-turner.com/remoteflailbot/)





## Features & Specification

Flailbot	Original (40hp)
<b>Operation</b>	
Max Slope	55°
Transmission	Hydrostatic
Speed	0-7 km/h
Weight	1280kg / 2,822lbs
<b>Engine</b>	
Brand / Make	Perkins
Model	3 Cylinders, Diesel
Engine Size	1,496 Litres / 91,292 in <sup>3</sup>
Power	30 kW / 40.8 Cv
Max Torque	112 Nm / 83 ft-lb @ 1800 rpm
Intake	Turbocharged
Cooling	Liquid
Air Filter	Dry
Diesel Tank Capacity	22 Litres / 6 USG
Engine Oil Quantity	7 Litres / 2 USG
<b>Electrical Circuit</b>	
Operating Voltage	12 Vcc
Alternator	65 Amp
Battery	60 Ah

Flailbot	Original (40hp)
<b>Hydraulic System</b>	
Displacement	Triple piston pump with variable engine size and closed circuit
Displacement Capacity	65 Litres max @ 2750 rpm 17 USG max @ 2750 rpm
Displacement Pressure	280 Bar max
Services	Gear Pump
Services Capacity	13 Litres max @ 2750 rpm 3 USG max @ 2750 rpm
Services Pressure	200 Bar max
Tool	Closed Circuit Piston Pump
Tool Capacity	58 Litres max @ 2750 rpm 15 USG max @ 2750 rpm
Tool Pressure	280 Bar max
Oil Tank Capacity	50 Litres / 13 USG
Operating Oil Quantity	60 Litres / 16 USG
<b>Controls</b>	
Brand	Scanreco
Frequency	434 Mhz
Range Signal	150m / 492'
Battery	Rechargeable

### Excellent grip characteristics

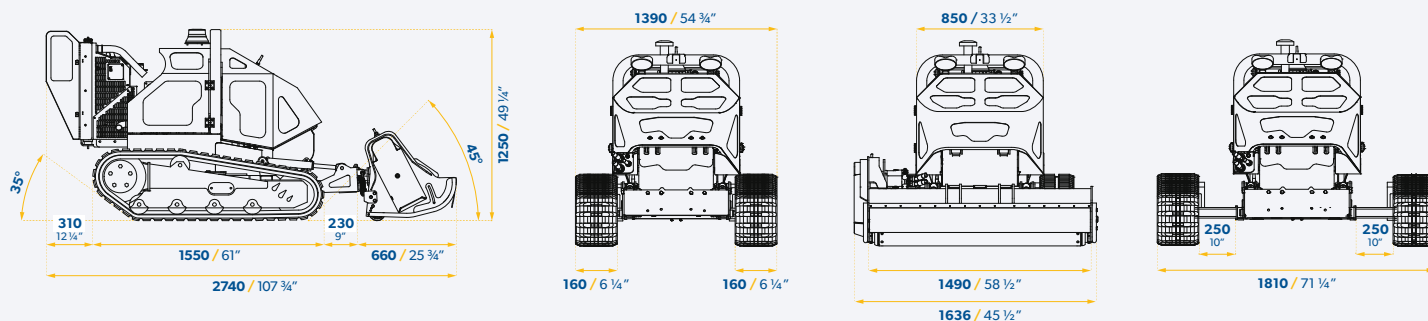
Individual tracks can be extended by up to 250mm (10").

### Hydraulic front hood

Operational via controls with electronic interlock for safety dependent on rotor direction.

### Flailbot Original Weights & Dimensions

Engine Size / Capacity  
**40hp /**  
 1,496 Litres / 91,292 in<sup>3</sup>  
 Flailbot with Oil & Fuel  
**1280 kg / 2,822 lbs**  
 1500 Flail Head  
**225 kg / 496 lbs**



### Precise control

The remote control, operating all Flailbot functions has a range of 150m (492').



# Flailbot Extra

A machine for all terrains and types of contract – that command a little more power the Flailbot Extra is the machine of choice. Running the same chassis components as the Standard 40hp machine, albeit with a more powerful engine producing 50hp.

The powerful 50hp Perkins engine guarantees you will never run out of power, this can cope with all types of operations from general grass cutting and scrub/forestry cutting to stump grinding.

## Key Features

- 4 Cylinder 50hp Perkins engine
- 29 litre (8USG) fuel tank capacity
- Closed circuit triple piston pump circuit
- 150m (492') working range
- 55 degree max working angle



**Want to know more about  
the Flailbot range?**

Scan the QR code to the left with a smart phone or tablet and compatible app to instantly view the page.

Alternatively visit:

[www.bomford-turner.com/remote/flailbot-extra/](http://www.bomford-turner.com/remote/flailbot-extra/)







### Shredder head

Back to back blades for shredding green vegetation.



### Fixed tooth forestry mulcher

Suitable for managing wooded areas and providing a chipped wood finish.

### Flailbot Extra Weights & Dimensions

Engine Size / Capacity  
**50hp /**  
**2,200 Litres / 134,252 in<sup>3</sup>**

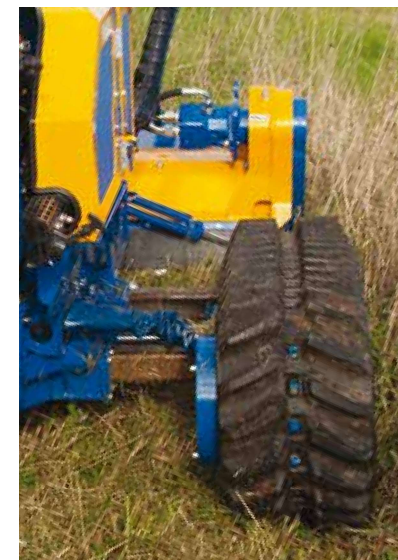
Flailbot with Oil & Fuel  
**1360 kg / 2,998 lbs**

1500 Flail Head  
**225 kg / 496 lbs**

## Features & Specification

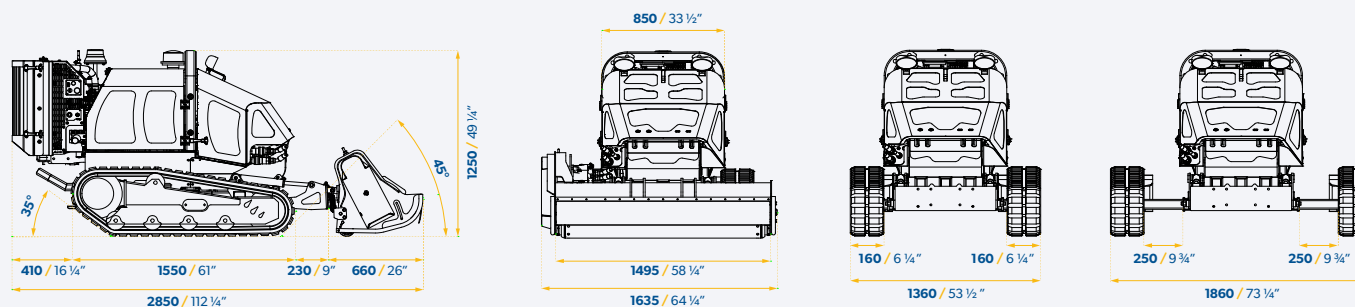
Flailbot	Extra (50hp)
<b>Operation</b>	
Max Slope	55°
Transmission	Hydrostatic
Speed	0-7 km/h
Weight	1360kg / 2,998 lbs
<b>Engine</b>	
Brand / Make	Perkins
Model	4 Cylinders, Diesel
Engine Size	2,200 Litres / 134,252 in <sup>3</sup>
Power	36.3 kW / 49.4 Cv
Max Torque	140 Nm / 103 ft-lb @ 1800 rpm
Intake	Turbocharged
Cooling	Liquid
Air Filter	Dry
Diesel Tank Capacity	29 Litres / 8 USG
Engine Oil Quantity	10 Litres / 3 USG
<b>Electrical Circuit</b>	
Operating Voltage	12 Vcc
Alternator	65 Amp
Battery	44 Ah

Flailbot	Extra (50hp)
<b>Hydraulic System</b>	
Displacement	Triple piston pump with variable engine size and closed circuit
Displacement Capacity	76 Litres max @ 2700 rpm 20 USG max @ 2700 rpm
Displacement Pressure	320 Bar max
Services	Gear Pump
Services Capacity	13 Litres max @ 2700 rpm 3 USG max @ 2700 rpm
Services Pressure	200 Bar max
Tool	Closed Circuit Piston Pump
Tool Capacity	76 Litres max @ 2700 rpm 20 USG max @ 2700 rpm
Tool Pressure	280 Bar max
Oil Tank Capacity	50 Litres / 13 USG
Operating Oil Quantity	60 Litres / 16 USG
<b>Controls</b>	
Brand	Scanreco
Frequency	434 Mhz
Range Signal	150m / 492'
Battery	Rechargeable



### Variable track width

For particularly difficult or steep conditions, track width can be increased individually by 250mm (10"), increasing the footprint for added stability and grip.





# Flailbot Supreme

The flagship model – enjoy ultimate horse power with the 70hp engine giving maximum power and control to the operators finger tips.

Fitted with a tier 4 Final Perkins engine, producing over 200 NM of torque making the Flailbot Supreme the most powerful model in the range. The Supreme is fitted as standard with hydraulic adjustable track width and auto track tension system.

## Key Features

- 4 Cylinder 70hp Perkins engine
- Tier 4 final engine emissions
- Hydraulically adjustable track frame
- 40 litre (11 USG) fuel tank capacity
- 150m (492') working range



### Want to know more about the Flailbot range?

Scan the QR code to the left with a smart phone or tablet and compatible app to instantly view the page.

Alternatively visit:

<http://www.bomford-turner.com/remote/flailbot-supreme/>







### Clearing areas of dense vegetation

Cutting through heavy undergrowth to allow easy access.



### Rear protection

Fitted with rear protection bar and towing anchor point.

### Flailbot Supreme Weights & Dimensions

Engine Size / Capacity

**70hp /**  
**2,226 Litres / 135,839 in<sup>3</sup>**

Flailbot with Oil & Fuel

**2200 kg / 4,850 lbs**

1650 Flail Head

**450 kg / 992 lbs**

## Features & Specification

Flailbot	Supreme (70hp)
<b>Operation</b>	
Max Slope	55°
Transmission	Hydrostatic
Speed	0-7 km/h
Weight	2200kg / 4,850 lbs
<b>Engine</b>	
Brand / Make	Perkins, Tier 4 Final
Model	4 Cylinders, Diesel, Direct Injection
Engine Size	2,226 Litres / 135,839 in <sup>3</sup>
Power	50 kW / 68 Cv
Max Torque	208 Nm / 153 ft-lb @ 1800 rpm
Intake	Turbocharged aftercooled
Cooling	Liquid
Air Filter	Dry
Diesel Tank Capacity	40 Litres / 11 USG
Engine Oil Quantity	10.6 Litres / 3 USG
<b>Electrical Circuit</b>	
Operating Voltage	12 Vcc
Alternator	85 Amp
Battery	70 Ah

Flailbot	Supreme (70hp)
<b>Hydraulic System</b>	
Displacement	Triple piston pump with variable engine size and closed circuit
Displacement Capacity	113 Litres max @ 2500 rpm 30 USG max @ 2500 rpm
Displacement Pressure	300 Bar max
Services	Gear Pump
Services Capacity	15 Litres max @ 2500 rpm 4 USG max @ 2500 rpm
Services Pressure	200 Bar max
Tool	Closed Circuit Piston Pump
Tool Capacity	83 Litres max @ 2500 rpm 22 USG max @ 2500 rpm
Tool Pressure	280 Bar max
Oil Tank Capacity	80 Litres / 21 USG
Operating Oil Quantity	90 Litres / 24 USG
<b>Controls</b>	
Brand	Scanreco
Frequency	434 Mhz
Range Signal	150m / 492'
Battery	Rechargeable



### Shredding head

Fitted as standard with 1650mm (5'5") shredding head and pushbar.

