

Falcon Evo

The Falcon Evo range has been specifically designed for the large scale contractor.

With high specification options and a range of controls to select from, the Falcon range is the first choice for contractors.

Key Features

- 5.5m, 6.0m or 6.5m reach
- Heavy Duty Linkage
- 125 l/min independent system
- 1.2m or 1.5m cutting head
- Parallel option



Want to know more about the Falcon Evo range?

Scan the QR code to the left with a smart phone or tablet and compatible app to instantly view the page.

Alternatively visit: www.bomford-turner.com/landscape/arm-mowers/falcon-evo/



Product Specification

● Standard ○ Optional — Not Available

Falcon Evo	5.5m (18'1")	6.0m T (19'8")	6.5m T (21'4")	Bi-Way 5.5 (18'1")
Tractor requirements				
Minimum horse power	75hp	75hp	75hp	75hp
Minimum weight	3500kg 7716lbs	3800kg 8378lbs	4250kg 9367lbs	3000kg 6614lbs
Base unit mounting options				
Front mount	—	—	—	○
Mid-mount	—	—	—	—
Rear mount	●	●	●	●
Three point linkage (CAT II)	●	●	—	●
Axle bracket	○	○	●	○
Overall machine parameters				
Machine weight with head and oil	1790kg 3946lbs	1890kg 4167lbs	2190kg 4828lbs	1930kg 4255lbs
Capacity of oil tank	250L 66USG	250L 66USG	250L 66USG	250L 66USG
Weight of machine with oil but without head	1500kg 3307lbs	1600kg 3527lbs	1900kg 4189lbs	1640kg 3616lbs
Controls				
Cable Control (CC)	●	●	●	●
Low pressure hydraulics (LPH)	○	○	○	○
Electronic proportional control (EPP)	○	○	○	○
Intelligent control system (ICS)	○	○	○	—
Cable rotor reverse	○	○	○	○
Electronic rotor reverse	○	○	○	○
Hydraulic system				
System capability	74hp	74hp	74hp	74hp
Pump flow rate	125L 33USG	125L 33USG	125L 33USG	125L 33USG
Pump type (Gear/Piston/Helical)	Gear	Gear	Gear	Gear
Pump arrangement (Twin/In-line)	Twin	Twin	Twin	Twin
Independent hydraulics	●	●	●	●
Oil cooler	○	○	○	○

Falcon Evo	5.5m (18'1")	6.0m T (19'8")	6.5m T (21'4")	Bi-Way 5.5 (18'1")
Arm features and main frame				
Forward arm	—	—	—	—
Forward arm reach	—	—	—	—
Telescopic arm	—	●	●	—
Telescopic arm stroke	—	900mm 3'	900mm 3'	—
Power slew	●	●	●	●
Power slew angle	94°	94°	94°	94°
Gravity breakout protection	—	—	—	—
Hydraulic breakout protection	●	●	●	●
Arm float - manual operation	○	○	○	○
Arm float - electronic operation	○	○	○	○
Head float - manual operation	●	●	●	●
Head float - electronic operation	○	○	○	○
Left hand cutting	○	○	○	○
Right hand cutting	○	○	○	○
Left and right hand cutting	—	—	—	—
Arm attachments available				
Variable track bracket (VTB)	○	○	○	—
Sheartrim cutter bar	○	○	○	○
Pro-Saw	○	○	○	○
Ditch cleaner	○	○	○	—
Rotary head	○	○	○	—
Accessories				
Road Lights	●	●	●	●
Debris Blower	○	○	○	○
Warning Arrow (Magnetic / Fixed)	○	○	○	○
Cab Guard Kit	●	●	●	●
Cutting heads (For Flail compatibility see page 95)				
1.2m Pro-Cut - 115/150mm roller	○	○	○	○
1.5m Pro-Cut - 115/150mm roller	○	○	○	○
1.2m Pro-Cut ISMP - 115/150mm roller	○	○	○	○
2m HD head	○	○	○	○

Pressed steel first arm construction

Strength and weight-saving without compromise.

Oil cooler

Standard on all models (cable controls as an option).

125L and 72 HP pumps

Comes as standard, with 137L and 85HP options.



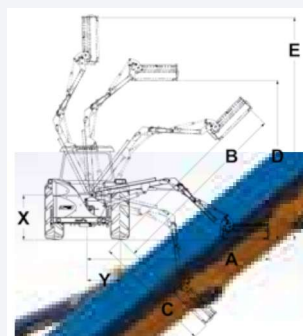
Bi-Way arm options

Allows the machine to cut in both forward and reverse directions.

Working Reach

Head used for calcs: 1.2 Pro-Cut

	Falcon 5.5m (18'1")	Falcon 6.0m T (19'8")	Falcon 6.5m (21'4")	Falcon Bi-Way 5.5m (18'1")
A	5.54m/18'2"	6.07m/19'11"	6.42m/21'1"	5.72m/18'9"
B	5.69m/18'8"	6.22m/20'5"	6.74m/22'1"	5.82m/19'1"
C	3.49m/11'5"	4.42m/14'6"	4.10m/13'11"	3.86m/12'8"
D	4.42m/14'6"	4.54m/14'11"	5.65m/18'6"	4.74m/15'7"
E	6.06m/19'	6.18m/20'3"	7.67m/25'2"	6.92m/22'8"
X	1.35m/4'5"	1.35m/4'5"	1.35m/4'5"	1.35m/4'5"
Y	1.0m/3'4"	1.0m/3'4"	1.0m/3'4"	1.0m/3'4"



Falcon Evo Forward

The Falcon Evo Forward arm is perfect for contractors and municipal environments, where the added benefits of a forward arm is required to improve visibility.

With high specification options and a range of controls to select from, the Falcon range is first choice for contractors.

Key Features

- 5.5m or 6.0/6.5m telescopic reach
- Fixed forward reach of 1.2m
- Heavy duty linkage on 5.5 or axle bracket mounted on 6.0 & 6.5
- 125 l/min independent system
- 1.2m or 1.5m cutting head



Want to know more about the Falcon Evo Forward?

Scan the QR code to the left with a smart phone or tablet and compatible app to instantly view the page.

Alternatively visit: www.bomford-turner.com/landscape/arm-mowers/falcon-evo-forward/





Telescopic 3rd arm on 6.0T and 6.5T models
Gives increased flexibility.



Excellent reach characteristics
Enables cutting in challenging environments.



Oil cooler
Standard on all models (cable controls as an option).

Product Specification

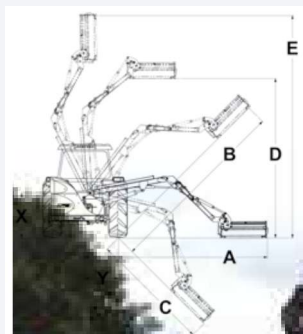
● Standard ○ Optional — Not Available

Falcon Evo FWD	FWD 5.5 (18'1")	FWD 6.0T (19'8")	FWD 6.5T (21'4")
Tractor requirements			
Minimum horse power	100hp	120hp	120hp
Minimum weight	4000kg 8819lbs	4500kg 9921lbs	4700kg 10362lbs
Base unit mounting options			
Front mount	—	—	—
Mid-mount	—	—	—
Rear mount	●	●	●
Three point linkage (CAT II)	●	○	—
Axle bracket	○	○	○
Overall machine parameters			
Machine weight with head and oil	1990kg 4387lbs	2190kg 4828lbs	2245kg 4950lbs
Capacity of oil tank	250L 66USG	250L 66USG	250L 66USG
Weight of machine with oil but without head	1700kg 3748lbs	1900kg 4189lbs	1955kg 4310lbs
Controls			
Cable Control (CC)	●	●	●
Low pressure hydraulics (LPH)	—	—	—
Electronic proportional control (EPP)	○	○	○
Intelligent control system (ICS)	○	○	○
Cable rotor reverse	●	●	●
Electronic rotor reverse	○	○	○
Hydraulic system			
System capability	74hp	74hp	74hp
Pump flow rate	125L 33USG	125L 33USG	125L 33USG
Pump type (Gear/Piston/Helical)	Gear	Gear	Gear
Pump arrangement (Twin/In-line)	Twin	Twin	Twin
Independent hydraulics	●	●	●
Oil cooler	●	●	●

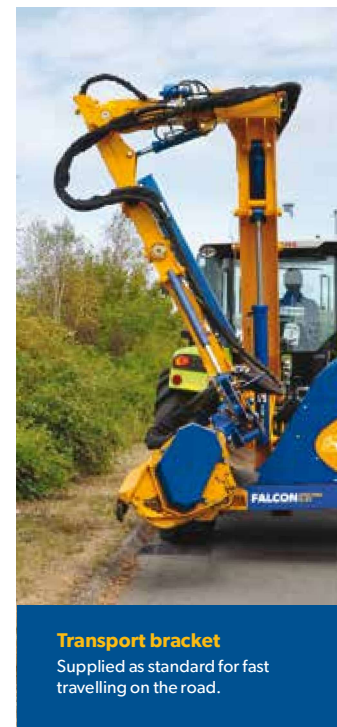
Working Reach

Head used for calcs: 1.2 Pro-Cut

	Falcon Evo FWD 5.5m (18'1")	Falcon Evo FWD 6.0m T (19'8")	Falcon Evo FWD 6.5m T (21'4")
A	5.58m/18'4"	6.1m/20'	6.55m/21'6"
B	5.73m/18'10"	6.45m/21'2"	6.71m/22'
C	3.62m/11'11"	4.68m/15'4"	4.90m/16'11"
D	4.99m/16'5"	5.45m/17'11"	5.73m/18'10"
E	6.83m/22'5"	7.56m/24'10"	7.79m/25'7"
X	1.35m/4'9"	1.35m/4'9"	1.35m/4'9"
Y	1.0m/3'4"	1.0m/3'4"	1.0m/3'4"



Falcon Evo FWD	FWD 5.5 (18'1")	FWD 6.0T (19'8")	FWD 6.5T (21'4")
Arm features and main frame			
Forward arm	1200mm 3'11"	1200mm 3'11"	1200mm 3'11"
Telescopic arm	●	●	●
Telescopic arm stroke	—	900mm 3'	900mm 3'
Power slew	●	●	●
Power slew angle	94°	94°	94°
Gravity breakout protection	—	—	—
Hydraulic breakout protection	●	—	—
Arm float - manual operation	●	●	●
Arm float - electronic operation	●	●	●
Head float - manual operation	○	○	○
Head float - electronic operation	●	●	●
Left hand cutting	○	○	○
Right hand cutting	○	○	○
Left and right hand cutting	—	—	—
Arm attachments available			
Variable track bracket (VTB)	—	—	—
Sheartrim cutter bar	○	○	○
Pro-Saw	○	○	○
Ditch cleaner	○	○	○
Rotary head	○	○	○
Accessories			
Road Lights	●	●	●
Debris Blower	○	○	○
Warning Arrow (Magnetic / Fixed)	○	○	○
Cab Guard Kit	●	●	●
Cutting heads (For Flail compatibility see page 95)			
1.2m Pro-Cut - 115/150mm roller	○	○	○
1.5m Pro-Cut - 115/150mm roller	○	○	○
1.2m Pro-Cut ISMP - 115/150mm roller	○	○	○
2m HD head	○	○	○



Transport bracket
Supplied as standard for fast travelling on the road.



Falcon Evo VFA

The Falcon Evo VFA (Variable Forward Arm) is perfect for contractors and municipal environments, where the added benefits of a forward arm is required to improve visibility.

This flagship model in the VFA range provides an unrivalled 2.1m total travel including 1.8m forward reach, resulting in an optimum mid-mounted cutting head position.

Key Features

- 6.5m reach
- Over 2m traverse on variable forward arm
- Axle bracket mounted only
- 125 l/min independent system



Want to know more about the Falcon Evo VFA?

Scan the QR code to the left with a smart phone or tablet and compatible app to instantly view the page.

Alternatively visit: www.bomford-turner.com/landscape/arm-mowers/falcon-evo-vfa/



Product Specification

● Standard ○ Optional — Not Available

Falcon Evo VFA	VFA 6.5m P (21'4")
Tractor requirements	
Minimum horse power	120hp
Minimum weight	4800kg / 10582lbs
Base unit mounting options	
Front mount	—
Mid-mount	—
Rear mount	●
Three point linkage (CAT II)	—
Axle bracket	●
Overall machine parameters	
Machine weight with head and oil	2270kg / 5005lbs
Capacity of oil tank	250L / 66USG
Weight of machine with oil but without head	1980kg / 4365lbs
Controls	
Cable Control (CC)	●
Low pressure hydraulics (LPH)	—
Electronic proportional control (EPP)	○
Intelligent control system (ICS)	○
Cable rotor reverse	○
Electronic rotor reverse	○
Hydraulic system	
System capability	74hp
Pump flow rate	125L / 33USG
Pump type (Gear/Piston/Helical)	Gear
Pump arrangement (Twin/In-line)	Twin
Independent hydraulics	●
Oil cooler	●

Falcon Evo VFA	VFA 6.5m P (21'4")
Arm features and main frame	
Forward arm	1816mm / 6'
Telescopic arm	—
Telescopic arm stroke	—
Power slew	●
Power slew angle	94°
Gravity breakout protection	—
Hydraulic breakout protection	●
Arm float - manual operation	●
Arm float - electronic operation	●
Head float - manual operation	●
Head float - electronic operation	●
Left hand cutting	○
Right hand cutting	○
Left and right hand cutting	—
Arm attachments available	
Variable track bracket (VTB)	—
Sheartrim cutter bar	○
Pro-Saw	○
Ditch cleaner	○
Rotary head	○
Accessories	
Road Lights	●
Debris Blower	○
Warning Arrow (Magnetic / Fixed)	○
Cab Guard Kit	●
Cutting heads (For Flail compatibility see page 95)	
1.2m Pro-Cut - 115/150mm roller	○
1.5m Pro-Cut - 115/150mm roller	○
1.2m Pro-Cut ISMP - 115/150mm roller	○
2m HD head	○



Arm float cylinder

To aid grass cutting on roadsides.



Forward reach position

Enables mid-mounted head position with simplicity of rear mounted arm.



Parallel linkage

Comes as standard to assist operator control.



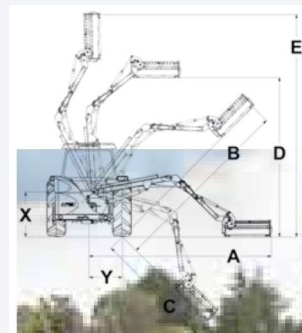
Variable Forward Arm

The VFA allows total flexibility of position during arms operation.

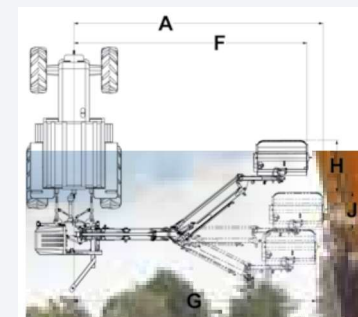
Working Reach

Head used for calcs: 1.2m Pro-Cut

Side Reach Falcon Evo 6.5m P VFA (21'4")	
A	6.5m / 21'4"
B	6.83m / 22'5"
C	4.61m / 15'2"
D	6.03m / 19'9"
E	7.66m / 25'2"
X	1.6m / 5'3"
Y	1.00m / 3'4"



Forward Reach Falcon Evo 6.5m P VFA (21'4")	
A	6.61m / 21'8"
F	5.93m / 19'5"
G	6.4m / 21'
H	1.82m / 6'
J	0.9m / 2'11"



Falcon Evo Telescopic VFA

The Falcon Evo Telescopic VFA (Variable Forward Arm) is perfect for contractors and municipal environments, where the added benefits of a forward arm is required to improve visibility.

The Falcon Evo Telescopic VFA provides an unrivalled 2.1m total travel including 1.8m forward reach, resulting in an optimum mid-mounted cutting head position.

Key Features

- 6.5m reach
- Over 2m traverse on variable forward arm
- Axle bracket mounted only
- 125 l/min independent system



Want to know more about the Falcon Evo Telescopic VFA?

Scan the QR code to the left with a smart phone or tablet and compatible app to instantly view the page.

Alternatively visit: www.bomford-turner.com/landscape/arm-mowers/falcon-evo-telescopic-vfa/



Product Specification

● Standard ○ Optional — Not Available

Falcon Evo Telescopic VFA	T-VFA 6.5m (21'4")
Tractor requirements	
Minimum horse power	120hp
Minimum weight	4800kg / 10582lbs
Base unit mounting options	
Front mount	—
Mid-mount	—
Rear mount	●
Three point linkage (CAT II)	—
Axle bracket	●
Overall machine parameters	
Machine weight with head and oil	2270kg / 5005lbs
Capacity of oil tank	250L / 66USG
Weight of machine with oil but without head	1980kg / 4365lbs
Controls	
Cable Control (CC)	●
Low pressure hydraulics (LPH)	—
Electronic proportional control (EPP)	○
Intelligent control system (ICS)	○
Cable rotor reverse	○
Electronic rotor reverse	○
Hydraulic system	
System capability	74hp
Pump flow rate	125L / 33USG
Pump type (Gear/Piston/Helical)	Gear
Pump arrangement (Twin/In-line)	Twin
Independent hydraulics	●
Oil cooler	●

Falcon Evo Telescopic VFA	T-VFA 6.5m (21'4")
Arm features and main frame	
Forward arm	2112mm / 6'11"
Telescopic arm	●
Telescopic arm stroke	900mm / 2'11"
Power slew	●
Power slew angle	94°
Gravity breakout protection	—
Hydraulic breakout protection	●
Arm float - manual operation	●
Arm float - electronic operation	●
Head float - manual operation	●
Head float - electronic operation	●
Left hand cutting	○
Right hand cutting	○
Left and right hand cutting	—
Arm attachments available	
Variable track bracket (VTB)	—
Sheartrim cutter bar	○
Pro-Saw	○
Ditch cleaner	○
Rotary head	○
Accessories	
Road Lights	●
Debris Blower	○
Warning Arrow (Magnetic / Fixed)	○
Cab Guard Kit	●
Cutting heads (For Flail compatibility see page 95)	
1.2m Pro-Cut - 115/150mm roller	○
1.5m Pro-Cut - 115/150mm roller	○
1.2m Pro-Cut ISMP - 115/150mm roller	○
2m HD head	○

Telescopic second boom

To give greater reach in those harder to reach areas, all controlled from the in cab controls.

Close in ground cutting

Variable arm technology allows forward and rearward reach, enabling cutting in behind the tractor wheel.

Close in cutting capabilities

To allow cutting in tight spaces and narrow lanes.



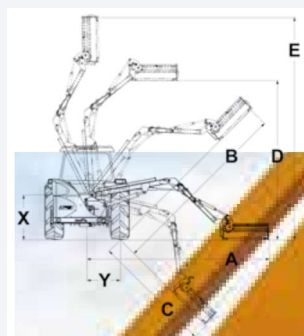
Telescopic Reach

The VFA allows total flexibility of position during arms operation.

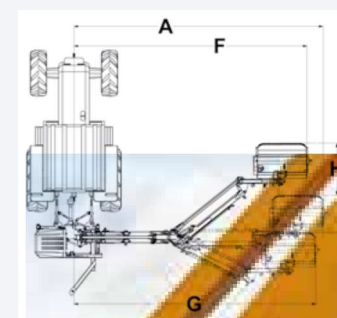
Working Reach

Head used for calcs: 1.2m Pro-Cut

Side Reach Falcon Evo 6.5m T-VFA (21'4")	
A	6.5m / 21'4"
B	6.83m / 22'5"
C	4.61m / 15'2"
D	6.03m / 19'9"
E	7.66m / 25'2"
X	1.6m / 5'3"
Y	1.00m / 3'4"



Forward Reach Falcon Evo 6.5m T-VFA (21'4")	
A	6.61m / 21'8"
F	5.93m / 19'5"
G	6.4m / 21'
H	1.82m / 6'
J	0.9m / 2'11"



Front Mount Range

The Bomford front mount range is designed with local authorities in mind where front mounted operations are required.

There are numerous fitting options on this machine, for tractors, trucks and loading shovels.

Key Features

- 4.9m, 5.4m or 5.8m reach options
- Front mounted
- Low profile design for good forward visibility
- 125 l/min fully independent hydraulic system
- Left and right hand side cutting
- DIN3 plate mounting option
- Tractor front linkage option



Want to know more about the Front Mount Range?

Scan the QR code to the left with a smart phone or tablet and compatible app to instantly view the page.

Alternatively visit: www.bomford-turner.com/landscape/arm-mowers/front-mount-range/



Product Specification

● Standard ○ Optional — Not Available

Front Mount Range	B49FM (16'4")	B54FM (17'9")	B58FM T (19')
Tractor requirements			
Minimum horse power	70hp	80hp	90hp
Minimum weight	4000kg 8819lbs	4250kg 9370lbs	4500kg 9921lbs
Base unit mounting options			
Front mount	●	●	●
Mid-mount	—	—	—
Rear mount	—	—	—
Three point linkage (CAT II)	—	—	—
Axle bracket	—	—	—
Overall machine parameters			
Machine weight with head and oil	1400kg 3086lbs	1460kg 3219lbs	1540kg 3395lbs
Capacity of oil tank	227L 60USG	227L 60USG	227L 60USG
Weight of machine with oil but without head	1100kg 2425lbs	1160kg 2557lbs	1240kg 2734lbs
Controls			
Cable Control (CC)	●	●	●
Low pressure hydraulics (LPH)	—	—	—
Electronic proportional control (EPP)	○	○	○
Intelligent control system (ICS)	○	○	○
Cable rotor reverse	●	●	●
Electronic rotor reverse	○	○	○
Hydraulic system			
System capability	74hp	74hp	74hp
Pump flow rate	125L 33USG	125L 33USG	125L 33USG
Pump type (Gear/Piston/Helical)	Gear	Gear	Gear
Pump arrangement (Twin/In-line)	Twin	Twin	Twin
Independent hydraulics	●	●	●
Oil cooler	—	●	—

Front Mount Range	B49FM (16'4")	B54FM (17'9")	B58FM T (19')
Arm features and main frame			
Forward arm	—	—	—
Forward arm reach (Fixed / Variable)	—	—	—
Telescopic arm	—	—	●
Telescopic arm stroke	—	—	900mm 3'
Power slew	●	●	●
Power slew angle	94°	94°	94°
Gravity breakout protection	—	—	—
Hydraulic breakout protection	●	●	●
Arm float - manual operation	●	●	●
Arm float - electronic operation	○	○	○
Head float - manual operation	○	○	○
Head float - electronic operation	○	○	○
Left hand cutting	●	●	●
Right hand cutting	○	○	○
Left and right hand cutting	●	●	●
Arm attachments available			
Variable track bracket (VTB)	—	—	—
Sheartrim cutter bar	○	○	○
Pro-Saw	○	○	○
Ditch cleaner	—	—	—
Rotary head	—	—	—
Accessories			
Road Lights	—	—	—
Debris Blower	—	—	—
Warning Arrow (Magnetic / Fixed)	○	○	○
Cab Guard Kit	●	●	●
Cutting heads (For Flail compatibility see page 95)			
1.2m Pro-Cut - 115/150mm roller	○	○	○
1.5m Pro-Cut - 115/150mm roller	○	○	○
1.2m Pro-Cut ISMP - 115/150mm roller	○	○	○

Fitting kits for trucks

Shown fitted to Unimog U500.

Fitting kits for tractor front linkages

Options for 1000/540 RPM.

Loading shovel fitting kits

Various makes and models available.



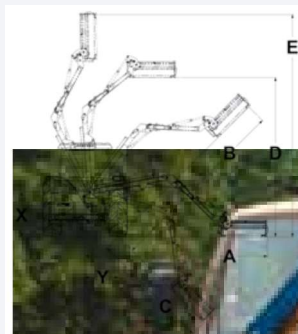
Telescopic second arm

On the B58FM T model.

Working Reach

Head used for calcs: 1.2 Pro-Cut

	B49FM 4.9m (16'4")	B54FM 5.4m (17'9")	B58FM T 5.8m (19')
A	4.9m / 16'4"	5.4m / 17'9"	5.8m / 19'
B	4.9m / 16'4"	5.4m / 17'9"	5.8m / 19'
C	3.4m / 11'2"	3.5m / 11'6"	3.6m / 11'10"
D	4.2m / 13'10"	4.7m / 15'7"	5m / 16'5"
E	6.1m / 20'	6.51m / 21'4"	6.7m / 22'
X	1.5m / 4'11"	1.5m / 4'11"	1.5m / 4'11"
Y	1.0m / 3'4"	1.0m / 3'4"	1.0m / 3'4"



Buzzard Evo

The Buzzard Evo range has been specifically designed for the large scale contractor and agency.

With a large choice in specification, and fully proportional controls.

Key Features

- 7.25m or 8m reach
- 1.2m or 1.5m cutting heads
- Oil cooled as standard
- ICS fully proportional controls



Want to know more about the Buzzard Evo Range?

Scan the QR code to the left with a smart phone or tablet and compatible app to instantly view the page.

Alternatively visit: www.bomford-turner.com/landscape/arm-mowers/buzzard-evo/



Product Specification

● Standard ○ Optional — Not Available

Buzzard Evo	7.25m T (23'9")	8.0m T (26'3")
Tractor requirements		
Minimum horse power	120hp	140hp
Minimum weight	4900kg 10803lbs	5200kg 11464lbs
Base unit mounting options		
Front mount	—	—
Mid-mount	—	—
Rear mount	●	●
Three point linkage (CAT II)	—	—
Axle bracket	●	●
Overall machine parameters		
Machine weight with head and oil	2290kg 5049lbs	2490kg 5490lbs
Capacity of oil tank	250L 66USG	250L 66USG
Weight of machine with oil but without head	2000kg 4009lbs	2200kg 4850lbs
Controls		
Cable Control (CC)	○	○
Low pressure hydraulics (LPH)	—	—
Electronic proportional control (EPP)	○	○
Intelligent control system (ICS)	●	●
Cable rotor reverse	●	●
Electronic rotor reverse	○	○
Hydraulic system		
System capability	74hp	74hp
Pump flow rate	125L 33USG	125L 33USG
Pump type (Gear/Piston/Helical)	Gear	Gear
Pump arrangement (Twin/In-line)	Twin	Twin
Independent hydraulics	●	●
Oil cooler	●	●

Buzzard Evo	7.25m T (23'9")	8.0m T (26'3")
Arm features and main frame		
Forward arm	—	—
Telescopic arm	●	●
Telescopic arm stroke	1300mm 4'3"	1450mm 4'9"
Power slew	●	●
Power slew angle	94°	94°
Gravity breakout protection	—	—
Hydraulic breakout protection	●	●
Arm float - manual operation	—	—
Arm float - electronic operation	●	●
Head float - manual operation	○	○
Head float - electronic operation	●	●
Left hand cutting	○	○
Right hand cutting	○	○
Left and right hand cutting	●	●
Arm attachments available		
Variable track bracket (VTB)	○	○
Sheartrim cutter bar	○	○
Pro-Saw	○	○
Ditch cleaner	○	○
Rotary head	○	○
Accessories		
Road Lights	●	●
Debris Blower	○	○
Warning Arrow (Magnetic / Fixed)	○	○
Cab Guard Kit	●	●
Cutting heads (For Flail compatibility see page 95)		
1.2m Pro-Cut - 115/150mm roller	○	○
1.5m Pro-Cut - 115/150mm roller	○	○
1.2m Pro-Cut ISMP - 115/150mm roller	○	○
2m HD head	○	○



Telescopic arm

Gives increased flexibility.



Powerful 74hp hydraulics

For continuous use. Twin pumps with separate oil tank.



Oil cooler

Standard on all models (cable controls as an option).



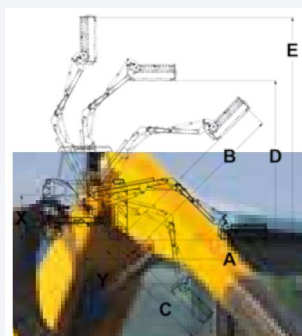
Fully enclosed hydraulics

Keeping components protected from the elements.

Working Reach

Head used for calcs: 1.2 Pro-Cut

	Buzzard Evo 7.25m T (23'9")	Buzzard Evo 8.0m T (26'3")
A	7.3m / 23'11"	7.94m / 26'1"
B	7.64m / 25'1"	8.07m / 26'6"
C	5.25m / 17'7"	5.91m / 19'5"
D	6.25m / 20'6"	6.86m / 22'6"
E	8.71m / 28'7"	8.87m / 29'1"
X	1.35m / 4'7"	1.35m / 4'7"
Y	1.00m / 3'4"	1.00m / 3'4"



Buzzard Evo Forward

The Buzzard Evo forward range has been specifically designed for the large scale contractor and agency.

With the added advantage of forward reach, give improved visibility for the operator along with a large choice in specification, and fully proportional controls.

Key Features

- 7.25m or 8m reach
- 1.2m or 1.5m cutting heads
- Oil cooled as standard
- ICS fully proportional controls



Want to know more about the Buzzard Evo Forward?

Scan the QR code to the left with a smart phone or tablet and compatible app to instantly view the page.

Alternatively visit: www.bomford-turner.com/landscape/arm-mowers/buzzard-evo-forward/



Product Specification

● Standard ○ Optional — Not Available

Buzzard Evo FWD	7.25m T (23'9")	8.0m T (26'3")
Tractor requirements		
Minimum horse power	120hp	140hp
Minimum weight	4900kg 10803lbs	5200kg 11464lbs
Base unit mounting options		
Front mount	—	—
Mid-mount	—	—
Rear mount	●	●
Three point linkage (CAT II)	—	—
Axle bracket	●	●
Overall machine parameters		
Machine weight with head and oil	2290kg 5049lbs	2490kg 5490lbs
Capacity of oil tank	250L 66USG	250L 66USG
Weight of machine with oil but without head	2000kg 4409lbs	2200kg 4850lbs
Controls		
Cable Control (CC)	○	○
Low pressure hydraulics (LPH)	—	—
Electronic proportional control (EPP)	○	○
Intelligent control system (ICS)	●	●
Cable rotor reverse	●	●
Electronic rotor reverse	○	○
Hydraulic system		
System capability	74hp	74hp
Pump flow rate	125L 33USG	125L 33USG
Pump type (Gear/Piston/Helical)	Gear	Gear
Pump arrangement (Twin/In-line)	Twin	Twin
Independent hydraulics	●	●
Oil cooler	●	●

Buzzard Evo FWD	7.25m T (23'9")	8.0m T (26'3")
Arm features and main frame		
Forward arm	1200mm 3'11"	1200mm 3'11"
Telescopic arm	●	●
Telescopic arm stroke	—	—
Power slew	●	●
Power slew angle	94°	94°
Gravity breakout protection	—	—
Hydraulic breakout protection	●	●
Arm float - manual operation	—	—
Arm float - electronic operation	●	●
Head float - manual operation	○	○
Head float - electronic operation	●	●
Left hand cutting	○	○
Right hand cutting	○	○
Left and right hand cutting	●	●
Arm attachments available		
Variable track bracket (VTB)	○	○
Sheartrim cutter bar	○	○
Pro-Saw	○	○
Ditch cleaner	○	○
Rotary head	○	○
Accessories		
Road Lights	●	●
Debris Blower	○	○
Warning Arrow (Magnetic / Fixed)	○	○
Cab Guard Kit	●	●
Cutting heads (For Flail compatibility see page 95)		
1.2m Pro-Cut - 115/150mm roller	○	○
1.5m Pro-Cut - 115/150mm roller	○	○
1.2m Pro-Cut ISMP - 115/150mm roller	○	○



Impressive reach

3 arm design gives versatile reach characteristics for flexibility around obstacles.



Transport position

Folding 3rd arm allows compact transport position.



Powerful 74hp hydraulics

For continuous use. Twin pumps with separate oil tank.



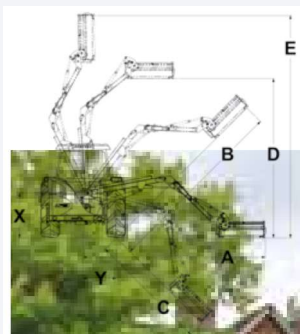
Forward reach position

Enables mid-mounted head position with simplicity of rear mounted arm.

Working Reach

Head used for calcs: 1.2 Pro-Cut

	Buzzard Evo FWD 7.25m T (23'9")	Buzzard Evo FWD 8.0m T (26'3")
A	7.19m / 23'7"	7.94m / 26'1"
B	7.27m / 23'10"	8.13m / 26'8"
C	5.47m / 17'11"	6.31m / 20'8"
D	6.8m / 22'4"	7.4m / 24'3"
E	8.52m / 27'11"	9.24m / 30'4"
X	1.35m / 4'7"	1.35m / 4'7"
Y	1.00m / 3'4"	1.00m / 3'4"



Buzzard Evo Telescopic VFA

The Buzzard Evo Telescopic VFA (Variable Forward Arm) is perfect for contractors and municipal environments, where the added benefits of a forward arm is required to improve visibility.

This latest flagship model in the VFA range provides an unrivalled 3.2m total travel including 2.1m forward reach, resulting in an optimum mid-mounted cutting head position.

Key Features

- 8.0m reach
- Over 3.2m traverse on variable forward arm
- Axle bracket mounted only
- 125 l/min independent system



Want to know more about the Buzzard Evo Telescopic VFA?

Scan the QR code to the left with a smart phone or tablet and compatible app to instantly view the page.

Alternatively visit: www.bomford-turner.com/landscape/arm-mowers/buzzard-evo-telescopic-vfa/



Product Specification

● Standard ○ Optional — Not Available

Buzzard Evo Telescopic VFA	T-VFA 8.0m (26'3")
Tractor requirements	
Minimum horse power	120hp
Minimum weight	4800kg / 10582lbs
Base unit mounting options	
Front mount	—
Mid-mount	—
Rear mount	●
Three point linkage (CAT II)	—
Axle bracket	●
Overall machine parameters	
Machine weight with head and oil	2270kg / 5005lbs
Capacity of oil tank	250L / 66USG
Weight of machine with oil but without head	1980kg / 4365lbs
Controls	
Cable Control (CC)	●
Low pressure hydraulics (LPH)	—
Electronic proportional control (EPP)	○
Intelligent control system (ICS)	○
Cable rotor reverse	○
Electronic rotor reverse	○
Hydraulic system	
System capability	74hp
Pump flow rate	125L / 33USG
Pump type (Gear/Piston/Helical)	Gear
Pump arrangement (Twin/In-line)	Twin
Independent hydraulics	●
Oil cooler	●

Buzzard Evo Telescopic VFA	T-VFA 8.0m (26'3")
Arm features and main frame	
Forward arm	2112mm / 6'11"
Telescopic arm	●
Telescopic arm stroke	900mm / 2'11"
Power slew	●
Power slew angle	94°
Gravity breakout protection	—
Hydraulic breakout protection	●
Arm float - manual operation	●
Arm float - electronic operation	●
Head float - manual operation	●
Head float - electronic operation	●
Left hand cutting	○
Right hand cutting	○
Left and right hand cutting	—
Arm attachments available	
Variable track bracket (VTB)	—
Sheartrim cutter bar	○
Pro-Saw	○
Ditch cleaner	○
Rotary head	○
Accessories	
Road Lights	●
Debris Blower	○
Warning Arrow (Magnetic / Fixed)	○
Cab Guard Kit	●
Cutting heads (For Flail compatibility see page 95)	
1.2m Pro-Cut - 115/150mm roller	○
1.5m Pro-Cut - 115/150mm roller	○
1.2m Pro-Cut ISMP - 115/150mm roller	○
2m HD head	○

Telescopic second boom

To give greater reach in those harder to reach areas, all controlled from the in cab controls.

Close in ground cutting

Variable arm technology allows forward and rearward reach, enabling cutting in behind the tractor wheel.

Close in cutting capabilities

To allow cutting in tight spaces and narrow lanes.



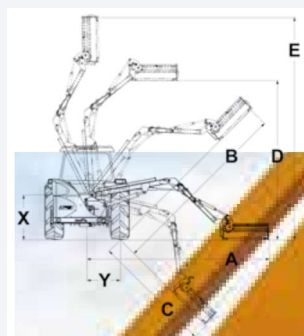
Telescopic Reach

The VFA allows total flexibility of position during arms operation.

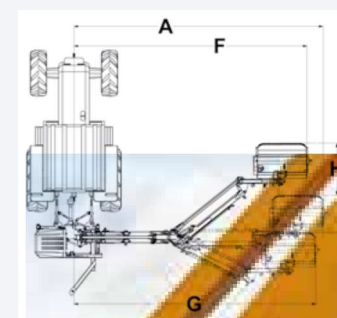
Working Reach

Head used for calcs: 1.2m Pro-Cut

Side Reach Buzzard Evo 8.0m T-VFA (26'3")	
A	8.0m / 26'3"
B	7.5m / 24'7"
C	6.0m / 19'8"
D	7.41m / 24'4"
E	8.62m / 28'3"
X	1.6m / 5'3"
Y	1.00m / 3'3"



Forward Reach Buzzard Evo 8.0m T-VFA (26'3")	
A	8.0m / 26'3"
F	7.59m / 24'11"
G	7.76m / 25'5"
H	2.12m / 6'11"
J	0.9m / 2'11"



B71M B80M

A professional range of machines designed for smaller, lightweight tractors. Requiring only a mass of 4900kg for the tractor, this range of arm mowers really gives the contractor true flexibility.

The 3 arm arrangement gives a versatile reach characteristic, allowing cutting over obstacles such as fences and guard rails.

Key Features

- 7.1m or 8m reach
- 1.2m or 1.5m cutting heads
- Oil cooled as standard
- ICS fully proportional controls



Want to know more about the B71M and B80M?

Scan the QR code to the left with a smart phone or tablet and compatible app to instantly view the page.

Alternatively visit: www.bomford-turner.com/landscape/arm-mowers/b71m-and-b80m/



Product Specification

● Standard ○ Optional — Not Available

B71M & B80M	7.1m (23'7")	8.0m (26'3")
Tractor requirements		
Minimum horse power	120hp	140hp
Minimum weight	4900kg 10803lbs	5200kg 11464lbs
Base unit mounting options		
Front mount	—	—
Mid-mount	—	—
Rear mount	●	●
Three point linkage (CAT II)	—	—
Axle bracket	●	●
Overall machine parameters		
Machine weight with head and oil	2290kg 5049lbs	2490kg 5490lbs
Capacity of oil tank	250L 66USG	250L 66USG
Weight of machine with oil but without head	2000kg 4409lbs	2200kg 4850lbs
Controls		
Cable Control (CC)	○	○
Low pressure hydraulics (LPH)	—	—
Electronic proportional control (EPP)	○	○
Intelligent control system (ICS)	●	●
Cable rotor reverse	●	●
Electronic rotor reverse	○	○
Hydraulic system		
System capability	74hp	74hp
Pump flow rate	125L 33USG	125L 33USG
Pump type (Gear/Piston/Helical)	Gear	Gear
Pump arrangement (Twin/In-line)	Twin	Twin
Independent hydraulics	●	●
Oil cooler	●	●

B71M & B80M	7.1m (23'7")	8.0m (26'3")
Arm features and main frame		
Forward arm	●	●
Telescopic arm	—	—
Telescopic arm stroke	—	—
Power slew	●	●
Power slew angle	110°	110°
Gravity breakout protection	—	—
Hydraulic breakout protection	●	●
Arm float - manual operation	—	—
Arm float - electronic operation	●	●
Head float - manual operation	○	○
Head float - electronic operation	●	●
Left hand cutting	○	○
Right hand cutting	○	○
Left and right hand cutting	●	●
Arm attachments available		
Variable track bracket (VTB)	○	○
Sheartrim cutter bar	○	○
Pro-Saw	○	○
Ditch cleaner	○	○
Rotary head	○	○
Accessories		
Road Lights	—	—
Debris Blower	—	—
Warning Arrow (Magnetic / Fixed)	○	○
Cab Guard Kit	●	●
Cutting heads (For Flail compatibility see page 95)		
1.2m Pro-Cut - 115/150mm roller	○	○
1.5m Pro-Cut - 115/150mm roller	○	○
1.2m Pro-Cut ISMP - 115/150mm roller	○	○



Heavy duty twin ram slew system

Includes hydraulic breakout to protect machine operator.



Forward reach position

Enables mid-mounted head position with simplicity of rear mounted arm.



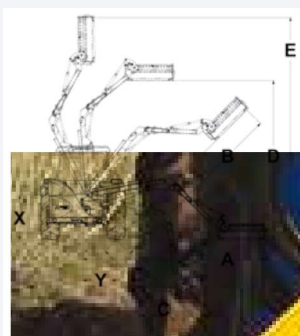
Transport position

Folding 3rd arm allows compact transport position.

Working Reach

Head used for calcs: 1.2 Pro-Cut

	B71M 7.1m (23'7")	B80M 8.0m (26'3")
A	7.1m / 23'7"	8.0m / 26'3"
B	6.95m / 23'	7.85m / 25'9"
C	5.27m / 17'3"	6.17m / 20'3"
D	4.75m / 15'5"	5.65m / 18'6"
E	8.26m / 26'3"	8.9m / 29'2"
X	1.35m / 4'7"	1.35m / 4'7"
Y	1.00m / 3'4"	1.00m / 3'4"



Reach great heights

With forward positioning and two reach options of 7.1m and 8.0m.



B81.81

A professional range of machines designed for smaller, lightweight tractors. Requiring only a mass of 4900kg for the tractor, this range of arm mowers really gives the contractor true flexibility.

The 3 arm arrangement gives a versatile reach characteristic, allowing cutting over obstacles such as fences and guard rails.

Key Features

- 8.1m reach
- 1.2m or 1.5m cutting heads
- Oil cooled as standard
- ICS fully proportional controls



Want to know more about the B81.81?

Scan the QR code to the left with a smart phone or tablet and compatible app to instantly view the page.

Alternatively visit: www.bomford-turner.com/landscape/arm-mowers/b8181/



Product Specification

● Standard ○ Optional — Not Available

B81.81	8.1m T (26'7")
Tractor requirements	
Minimum horse power	140hp
Minimum weight	5200kg 11464lbs
Base unit mounting options	
Front mount	○
Mid-mount	—
Rear mount	●
Three point linkage (CAT II)	—
Axle bracket	●
Overall machine parameters	
Machine weight with head and oil	2490kg 5490lbs
Capacity of oil tank	250L 66USG
Weight of machine with oil but without head	1955kg 4310lbs
Controls	
Cable Control (CC)	○
Low pressure hydraulics (LPH)	—
Electronic proportional control (EPP)	○
Intelligent control system (ICS)	●
Cable rotor reverse	●
Electronic rotor reverse	○
Hydraulic system	
System capability	74hp
Pump flow rate	125L 33USG
Pump type (Gear/Piston/Helical)	Gear
Pump arrangement (Twin/In-line)	Twin
Independent hydraulics	●
Oil cooler	●

B81.81	8.1m T (26'7")
Arm features and main frame	
Forward arm	—
Telescopic arm	●
Telescopic arm stroke	1450mm 4'9"
Power slew	●
Power slew angle	180°
Gravity breakout protection	—
Hydraulic breakout protection	●
Arm float - manual operation	—
Arm float - electronic operation	●
Head float - manual operation	○
Head float - electronic operation	●
Left hand cutting	○
Right hand cutting	○
Left and right hand cutting	●
Arm attachments available	
Variable track bracket (VTB)	○
Sheartrim cutter bar	○
Pro-Saw	○
Ditch cleaner	○
Rotary head	○
Accessories	
Road Lights	—
Debris Blower	—
Warning Arrow (Magnetic / Fixed)	○
Cab Guard Kit	●
Cutting heads (For Flail compatibility see page 95)	
1.2m Pro-Cut - 115/150mm roller	○
1.5m Pro-Cut - 115/150mm roller	○
1.2m Pro-Cut ISMP - 115/150mm roller	○
2m HD head	○



Heavy duty twin ram slew system

Includes hydraulic breakout to protect machine operator.



Telescopic arm

Gives increased flexibility.



ICS Controls

Fingertip control with adjustable speed settings.



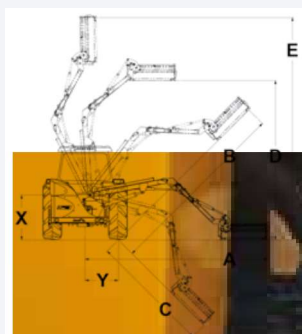
Transport cradle

For fast road transit.

Working Reach

Head used for calcs: **1.2 Pro-Cut**

	B81.81 8.1m T (26'7")
A	8.08m / 26'6"
B	7.93m / 26'
C	6.27m / 20'7"
D	6.52m / 21'5"
E	8.92m / 29'3"
X	1.3m / 4'1"
Y	1.0m / 3'3"



Eagle

The Eagle flail mower features a telescopic outer arm, giving it a maximum reach of 8.0 metres and the whole arm is mounted on a kingpost so that it can be slewed through 180 degrees for double sided, left or right-hand cutting.

The Eagle can be specified with either a gear or a piston system, and features wraparound steel hoses on the first arm and kingpost for durability and improved hose routing, along with weight saving.

Key Features

- 8m reach
- Left and right handed cutting
- 137 l/min independent hydraulic system
- 1.2m, 1.5m or 2m cutting head



Want to know more about the Eagle?

Scan the QR code to the left with a smart phone or tablet and compatible app to instantly view the page.

Alternatively visit: www.bomford-turner.com/landscape/arm-mowers/eagle/



Product Specification

● Standard ○ Optional — Not Available

Eagle	8.0m T (26'4")
Tractor requirements	
Minimum horse power	160hp
Minimum weight	6500kg 14330lbs
Base unit mounting options	
Front mount	—
Mid-mount	—
Rear mount	●
Three point linkage (CAT II)	—
Axle bracket	●
Overall machine parameters	
Machine weight with head and oil	2590kg 5710lbs
Capacity of oil tank	138L 37USG
Weight of machine with oil but without head	2230kg 4916lbs
Controls	
Cable Control (CC)	—
Low pressure hydraulics (LPH)	—
Electronic proportional control (EPP)	—
Intelligent control system (ICS)	●
Cable rotor reverse	—
Electronic rotor reverse	●
Hydraulic system	
System capability	85hp
Pump flow rate	137L 36USG
Pump type (Gear/Piston/Helical)	Gear
Pump arrangement (Twin/In-line)	Twin
Independent hydraulics	●
Oil cooler	●

Eagle	8.0m T (26'4")
Arm features and main frame	
Forward arm	—
Forward arm reach	—
Telescopic arm	●
Telescopic arm stroke	1300mm 4'3"
Power slew	●
Power slew angle	180°
Gravity breakout protection	—
Hydraulic breakout protection	●
Arm float - manual operation	●
Arm float - electronic operation	●
Head float - manual operation	○
Head float - electronic operation	●
Left hand cutting	○
Right hand cutting	○
Left and right hand cutting	●
Arm attachments available	
Variable track bracket (VTB)	—
Sheartrim cutter bar	○
Pro-Saw	○
Ditch cleaner	○
Rotary head	○
Accessories	
Road Lights	●
Debris Blower	—
Warning Arrow (Magnetic / Fixed)	○
Cab Guard Kit	●
Cutting heads (For Flail compatibility see page 95)	
1.2m Pro-Cut - 115/150mm roller	○
1.5m Pro-Cut - 115/150mm roller	○
1.2m Pro-Cut ISMP - 115/150mm roller	○
2m HD head	○

Steel hoses

Improves hose routing and aids cooling.

Heavy duty twin ram slew system

Includes hydraulic breakout to protect machine operator.

Worm drive slew

New turntable design allows precise control of cutting head.



Improved main cutting circuit oil cooler
For better temperature control.

Working Reach

Head used for calcs: 1.2 Pro-Cut

	Eagle 8.0MT (26'4")
A	8.0m / 26'3"
B	7.8m / 25'7"
C	6.2m / 20'4"
D	7.0m / 23'
E	8.8m / 28'11"
X	1.2m / 3'11"
Y	1.2m / 3'11"

